

GS-600EX



Crane capacity :
60,000 kg at 3.0 m

5-section long boom :
11.1 m - 42.0 m

2-staged bi-fold jib :
8.8 / 15.2 m

Maximum lifting height :
42.2 m (Boom)
57.1 m (Jib)

Maximum load radius :
36.5 m (Boom)
45.4 m (Jib)

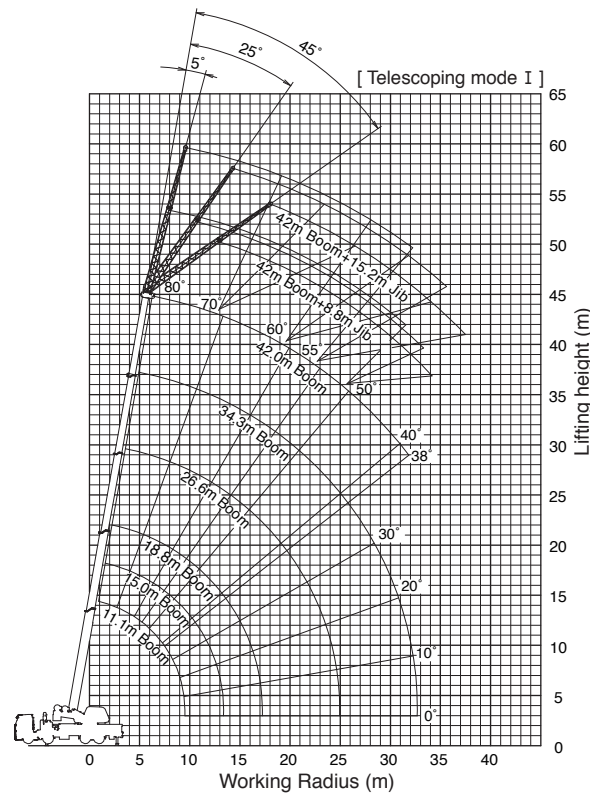
MODEL : GS-600EX

SPECIFICATIONS

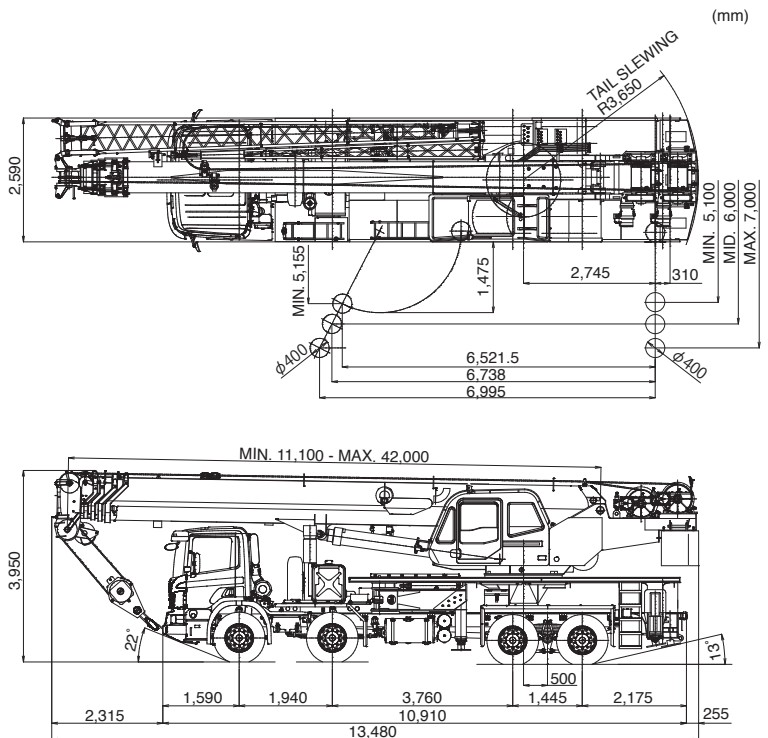
MAXIMUM CAPACITY	60,000 kg at 3.0 m
PERFORMANCE	
Max. Traveling Speed	60 km/h (Limiter for Singapore)
Gradeability (TAN θ)	50 %
WEIGHT Gross vehicle mass	42,800 kg
-front	15,800 kg
-rear	27,000 kg
MIN. TURNING RADIUS	12.0 m (at center of extreme outer tire)
BOOM	5-section full power partially synchronized telescoping boom of hexagonal box construction
Fully retracted length	11.1 m
Fully extended length	42.0 m
Extension speed	30.9 m in 130 seconds
Elevation speed	20° to 60° in 36 seconds
JIB	2-staged slewing around boom extension Triple offset (5°/ 25°/ 45°) type Stows alongside base boom section Assistant cylinders for mounting and stowing
Length	8.8 m and 15.2 m
MAIN WINCH	Variable speed type with grooved drum driven by hydraulic axial piston motor
Single line pull	54.9 kN {5,600 kgf}
Single line speed	146 m/min. (at the 4th layer)
Wire rope	Spin-resistant type 19 mm x 227 m
AUXILIARY WINCH	Variable speed type with grooved drum driven by hydraulic axial piston motor
Single line pull	54.9 kN {5,600 kgf}
Single line speed	135 m/min. (at the 2nd layer)
Wire rope	Spin-resistant type 19 mm x 127 m
SLEWING SPEED	1.9 min ⁻¹ {rpm}
Tail slewing radius	3,650 mm
HYDRAULIC SYSTEM	Pumps.....2 variable piston pumps for telescoping, elevating and winches. Tandem gear pump for slewing and optional equipment. Control valves..... Multiple valves actuated by pilot pressure with integral pressure relief valves. Circuit..... Equipped with air cooled type oil cooler Oil pressure appears on AML display for main circuit Hydraulic oil tank capacity.....approx. 690 liters

TADANO Automatic Moment Limiter (Model : AML-C)	Main unit in crane cab gives audible and visual warning of approach to overload. Automatically cuts out crane motions (including slewing motion) before overload. With working range (load radius and/or boom angle and/or tip height and/or slewing range) limit function. Automatic Speed Reduction and slow stop function on boom elevation and slewing. Following functions are displayed. •Load moment as percentage •Number of parts of line of rope •Boom angle •Boom length •Load radius •Outriggers position •Actual hook load •Permissible load •Boom position indicator •Potential hook height •Slewing angle •Main hydraulic oil pressure •Jib length and jib offset angle (only when jib in operation)
OUTRIGGERS	Hydraulically operated 4 point outriggers, front slewable and rear H-type outriggers. Each outrigger controlled simultaneously or independently from either side of carrier. Extension width Max...7,000 mm Middle...6,000 mm Minimum...5,100 mm Float size (Diameter)...400 mm
CARRIER ENGINE	SCANIA P360 CB 8 x 4....Right-hand steering Model.....DC13 114 360 EURO5 with SCR Type.....4 cycle, turbo charged and inter cooled. Piston displacement.....12.7 liters Max. output.....265 kW{360 hp} at 1,900 min ⁻¹ {rpm} Max. torque.....1,850 N-m at 1,000-1300 min ⁻¹ {rpm}
TRANSMISSION SUSPENSION	12+2 forward and 2 reverse speeds Automatic Front.....Parabolic, leaf spring 4 x 28 with anti-roll bar Rear.....Trapezoid, leaf spring 8x30/90 with anti-roll bar
TIRES	Front.....315/80R22.5, Single x 4 Rear.....315/80R22.5, Dual x 4 Spare.....315/80R22.5, Single x 1

WORKING RANGE



DIMENSION



*Some specifications are subject to change



Lifting your dreams

TADANO LTD. (International Division)

4-12, Kamezawa 2-chome, Sumida-ku Tokyo 130-0014, Japan

Phone: +81-3-3621-7750 Fax: +81-3-3621-7785

http://www.tadano.com/ E-mail: info@tadano.com

TADANO Asia Pte Ltd.

11, Tuas View Crescent, Multico Building, Singapore 637643

Phone: +65-6863-6901 Fax: +65-6863-6902

E-mail: tdn-crane@tadanoasia.com

2014-05

Printed in Japan