

TECHNICAL SPECIFICATIONS

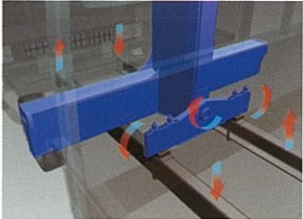
MODEL	TM-ZT653	TM-ZT654	TM-ZT655
MAXIMUM LIFTING CAPACITY	6,000 kg at 2.25 m (4-part line)		
CRANE CAPACITY	4,900kg at 3.1m (4-part lines)		
BOOM	Fully hydraulic telescoping boom	Fully powered partly synchronized telescoping boom	
Sections	3	4	5
Length	4.20m-9.50m	4.31m-12.91m	4.40m-15.92m
Extending Speed	5.3m / 17s	8.6m / 23s	11.5m / 30s
Elevation Range/Speed	1° to 82° / 13s		
Max. Hook Height*	Approx. 11.5m*	Approx. 11.5m*	Approx. 18m*
Max. Load Radius*	9.25m*	9.25m*	15.67m*
WINCH	Hydraulic motor driven. Spur gear speed reduction, provided with mechanical brake.		Hydraulic motor driven. Spur gear speed reduction, provided with mechanical brake and cable follower.
Max. Single Line Pull	14.72kN {1,500kgf}		
Max. Single Line Speed	64m/min. (at 4th layer)		
Wire rope (Diameter x length)	10mm x 63m	10mm x 80m	10mm x 95m
SWING	Hydraulic motor driven. Worm gear speed reduction. Continuous 360° full circle swing on ball bearing slew ring. Automatic swing lock.		
Speed	2.5 min ⁻¹ {rpm}		
OUTRIGGERS	Manually extended sliders and hydraulically extended jacks. Integral with crane frame. Power up and down.		
Extended Width	Max. : 3.9m Mid. : 3.1m Min. : 2.25m		
HYDRAULIC SYSTEM	Single gear pump		
Pump	Multiple control valves with integral safety valve		
Control Valves	Multiple control valves with integral safety valve		
STANDARD SAFETY EQUIPMENT	•Load meter •Load indicator •Over-winding alarm •Hook safety latch •Level gauge •Hydraulic safety valves, check valves and holding valves		
SUITABLE TRUCKS	Gross vehicle mass 20,000 or more		

TECHNICAL SPECIFICATION NOTE:

1. Operating speeds of the crane are guaranteed under the conditions that the pump delivery is 85L/min.
2. *No allowance included for boom deflection under loaded conditions.

Three-Point Support System (Equalizer Crane Support)

The equalizer crane support system protects the chassis frame by evenly distributing the load applied to the frame during vehicle travel to prevent excessive stress concentration at any one point.



Quicker Work With Outrigger Mechanism

The outrigger beams can be easily operated, by a finger to lock or release and extend or retract. Further more safety, new lock system prevents the outrigger from extending during vehicle travel. A level gauge is provided as standard equipment.



NEW LOCK SYSTEM



Full Circle, Continuous Swing

The newly designed compact swing post improves performance providing FULL CIRCLE, continuous rotation for more efficient operations.

AUTOMATIC SWING LOCK:

The boom is mechanically locked at the swing post base which prevents boom rotation during vehicle travel.



Automatic Swing Lock System

The boom is locked securely to prevent accidental boom swing out during driving.



CARGO CRANE

TM-ZT650



Lifting your dreams

TADANO (Thailand) Co., Ltd.
500/70 Moo.2, T.Tasit, A.Pluak Daeng, Rayong 21140, Thailand
Phone:+66-33-010-939 Fax: +66-33-010-940

TADANO LTD. (International Division)
4-12, Kamezawa 2-chome, Sumida-ku Tokyo 130-0014, Japan
Phone: 81-3-3621-7750 Fax: 81-3-3621-7785
<http://www.tadano-global.com> E-mail: tdnihq@tadano.co.jp

TM-ZT653

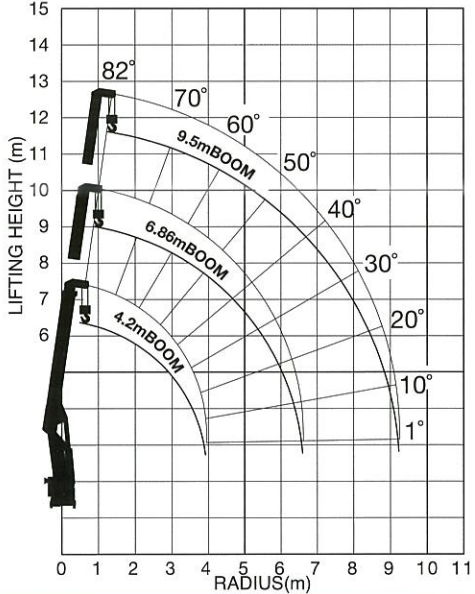
RATED LIFTING CAPACITIES - Empty Chassis

4.2m / 6.86m boom								
Load Radius (m)	2.25 and below	3.1	3.5	4.0	4.5	5.0	6.0	6.61
Rated Lifting Capacity (kg)	6,000	4,900	4,200	3,700	3,300	2,900	2,250	2,000
9.5m boom								
Load Radius (m)	4.5 and below	5.0	6.0	7.0	8.0	9.25		
Rated Lifting Capacity (kg)	3,000	2,900	2,250	1,850	1,550	1,300		

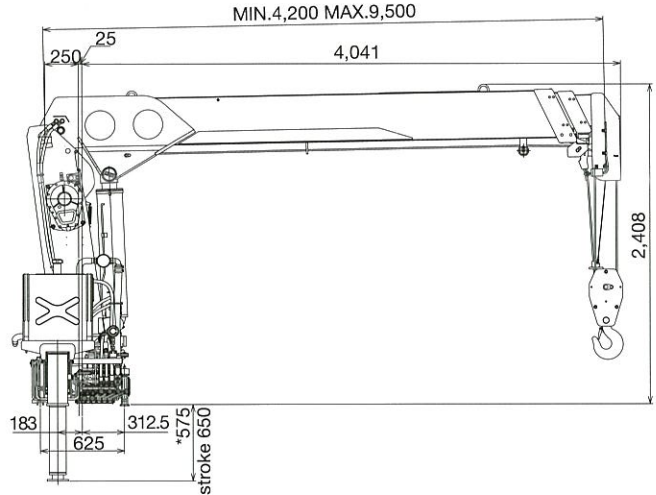
RATED LIFTING CAPACITIES NOTE:
The mass of hook (65kg), slings and all similarly used load handling devices must be added to the mass of the load.

WORKING RANGE NOTE:
Lifting heights and boom angles are based on a straight (unloaded) boom, and allowance should be made for boom deflection under loaded conditions.

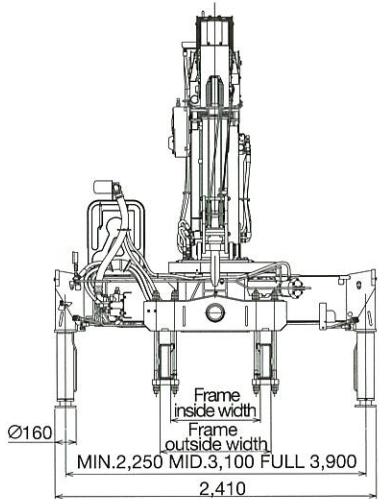
WORKING RANGE



DIMENSION



*This dimension depends on jack floats applied.



TM-ZT654

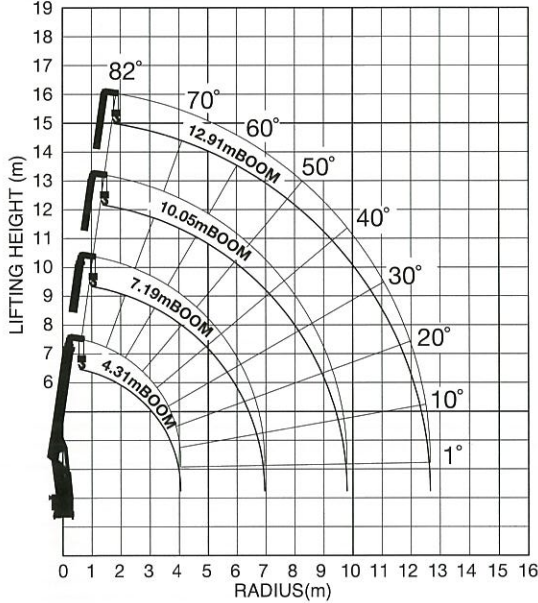
RATED LIFTING CAPACITIES - Empty Chassis

4.31m / 7.19m boom								
Load Radius (m)	2.25 and below	3.1	3.5	4.0	4.5	5.0	6.0	6.94
Rated Lifting Capacity (kg)	6,000	4,900	4,200	3,700	3,300	2,900	2,200	1,800
10.05m boom								
Load Radius (m)	4.5 and below	5.0	6.0	7.0	8.0	9.0	9.8	
Rated Lifting Capacity (kg)	3,000	2,900	2,200	1,800	1,550	1,350	1,200	
12.91m boom								
Load Radius (m)	4.5 and below	5.0	6.0	7.0	8.0	9.0	10.0	11.0
Rated Lifting Capacity (kg)	3,000	2,650	2,200	1,800	1,500	1,300	1,100	950

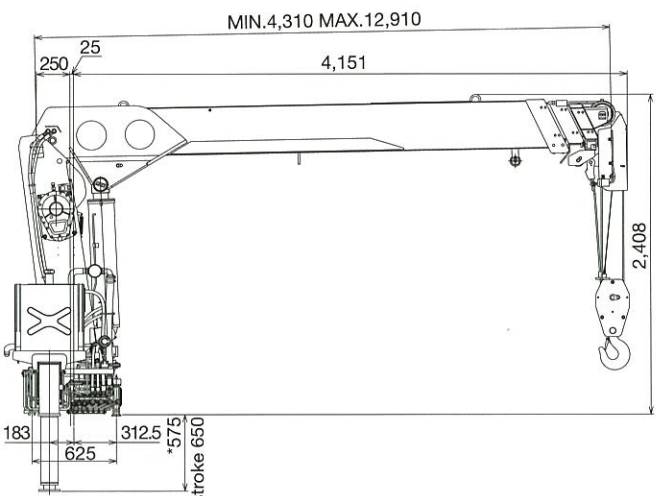
RATED LIFTING CAPACITIES NOTE:
The mass of hook (90kg), slings and all similarly used load handling devices must be added to the mass of the load.

WORKING RANGE NOTE:
Lifting heights and boom angles are based on a straight (unloaded) boom, and allowance should be made for boom deflection under loaded conditions.

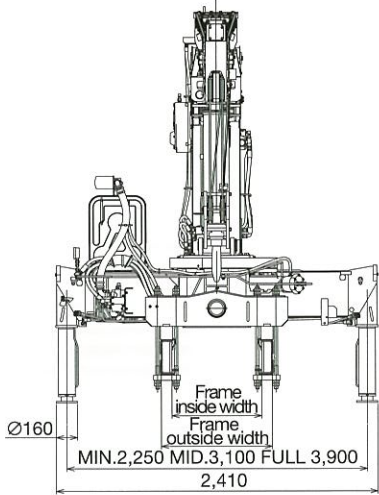
WORKING RANGE



DIMENSION



*This dimension depends on jack floats applied.



TM-ZT655

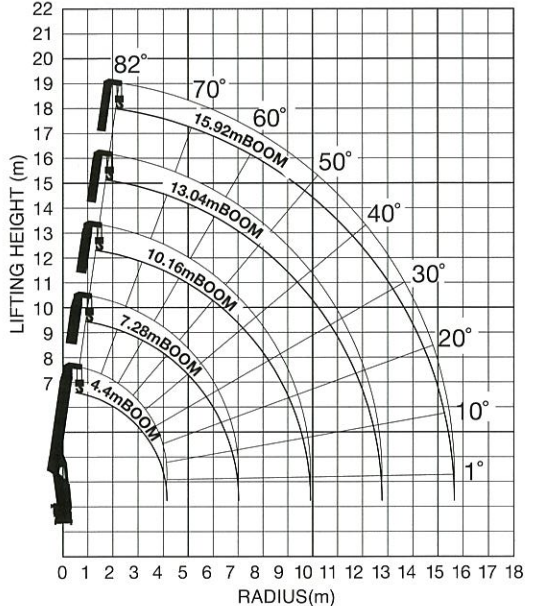
RATED LIFTING CAPACITIES - Empty Chassis

4.4m / 7.28m boom								
Load Radius (m)	2.25 and below	3.1	3.5	4.0	4.5	5.0	6.0	7.03
Rated Lifting Capacity (kg)	6,000	4,900	4,200	3,700	3,300	2,900	2,200	1,700
10.16m boom								
Load Radius (m)	4.5 and below	5.0	6.0	7.0	8.0	9.0	9.91	
Rated Lifting Capacity (kg)	3,000	2,700	2,200	1,750	1,350	1,100	950	
13.04m boom								
Load Radius (m)	4.5 and below	5.0	6.0	7.0	8.0	9.0	10.0	11.00
Rated Lifting Capacity (kg)	3,000	2,600	2,000	1,700	1,350	1,100	850	700
15.92m boom								
Load Radius (m)	5.0 and below	6.0	7.0	8.0	9.0	10.0	11.0	12.0
Rated Lifting Capacity (kg)	2,600	2,000	1,650	1,350	1,100	950	850	700

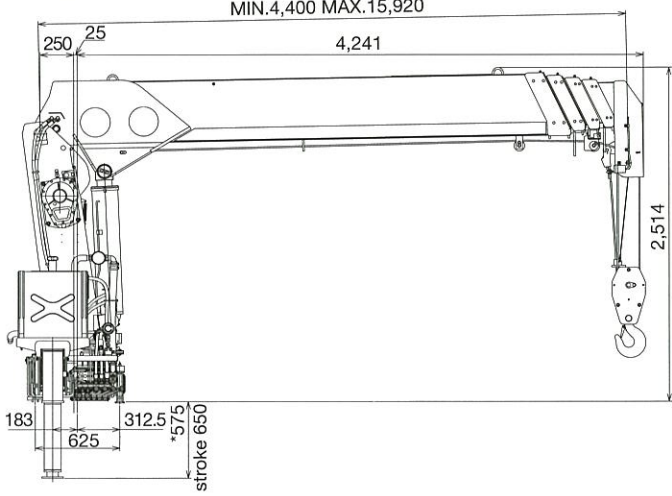
RATED LIFTING CAPACITIES NOTE:
The mass of hook (90kg), slings and all similarly used load handling devices must be added to the mass of the load.

WORKING RANGE NOTE:
Lifting heights and boom angles are based on a straight (unloaded) boom, and allowance should be made for boom deflection under loaded conditions.

WORKING RANGE



DIMENSION



*This dimension depends on jack floats applied.

